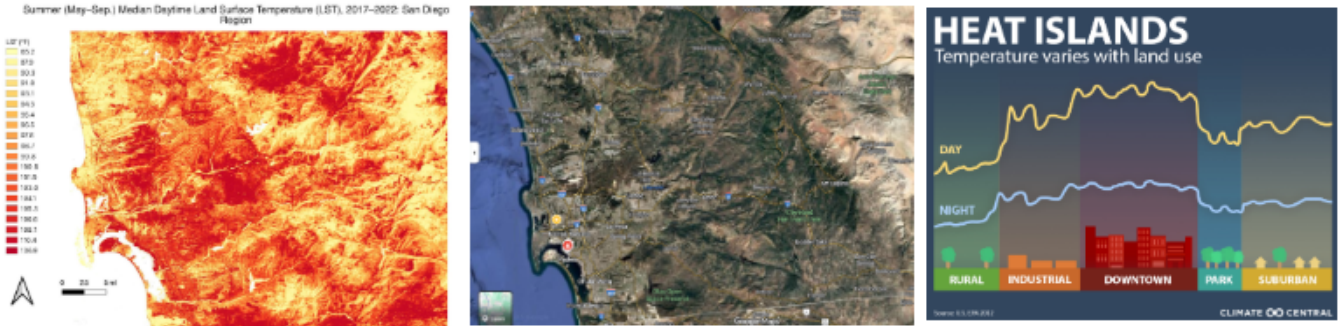


# Cool Zone Design – Student Task Planner

## UGC Cool Zone Design– Performance Task Overview

**SCENARIO:** In San Diego County, researchers and community members have noticed that some areas of the city are hotter than others. In particular, urban areas, those that are highly developed with buildings and infrastructure to support businesses as well as residential homes, have higher land surface temperatures than the surrounding areas (see maps below related to the Land Surface Temperature in the summer of 2017-2022 and the corresponding terrain).



The planning commission has an abandoned warehouse which they are going to convert into a community gathering space. You are part of a design team that has been hired by the planning commission who would like you to develop a cool zone to allow community members to enjoy on hot days. As a member of the design team you must determine aspects to incorporate in the cool zone and present the final model to the planning commission.

### Your Three Segments

<b>Segment 1:</b> <b>Knowledge Analysis</b>	<b>Segment 2:</b> <b>Individual Design for a cool zone</b>	<b>Segment 3:</b> <b>Group Design for a cool zone</b>
<b>What you'll do:</b> You will show your knowledge of factors that affect the land surface temperature of cities by answering several questions related to urban heat island factors.	<b>What you'll do:</b> You will take your knowledge of factors that affect land surface temperature to develop a design to use for a cool zone in your community.	<b>What you'll do:</b> You will take your individual design and collaborate with peers to develop a cool zone that would be presented to the planning commission.